

# VANDERLOC

## 54" Single Extra Wide Vanity

Rift White Oak

**RWS4-54**

### Features

- Inset construction with UV-coated plywood cabinet interior
- Full height doors with soft close Blum® 110° hinges
- Conversion Varnish finish
- 8" Tall metal base with built-in leg levelers and a 3/8" shadow gap between the vanity and the metal base
- Hardware size 8-13/16" & 3-3/4" center to center
- Top and faucet not included
- Plumbing rough in area cut-out detailed on page 2
- Made in the US

### Material

- Solid wood and Rift Oak veneers.
- Wood is a living material, and its beauty is enhanced by natural variations in grain, color, and pattern. No two pieces of wood are exactly the same, and the color will change with age, temperature, and exposure to light.
- The nature of wood grain can cause variations in stain depth. Our expert craftsmen hand-apply the stain to blend these variations.

### Installation

- Bath Vanity

### Included Products

- Decorative door hardware
- Leg leveling hardware
- Door bumpers

### Optional Products

- C-55-SRC.WS Silestone® Quartz Countertop
- C-55-SRC.SH Silestone® Quartz Countertop
- C-55-SRC.NH Silestone® Quartz Countertop
- C-55B Bath Vanity Top Backsplash

### Codes/Standards

- EPA TSCA Title VI
- CARB P2

### Vanderloc® One-Year Limited Warranty



Image displaying a 54" vanity in Smoked Modern with Satin Gold hardware. Countertop and faucet not included





### Available Wood & Hardware Finishes

Color tiles intended for reference only.

#### Wood Finish

	<b>.cb</b> Classic Black
	<b>.gw</b> Gray Weathered
	<b>.nw</b> Natural Weathered
	<b>.rb</b> Rich Brown
	<b>.sm</b> Smoked Modern

#### Hardware

	<b>.sg</b> Satin Gold
	<b>.mb</b> Matte Black
	<b>.sn</b> Satin Nickel
	<b>.ch</b> Polished Chrome

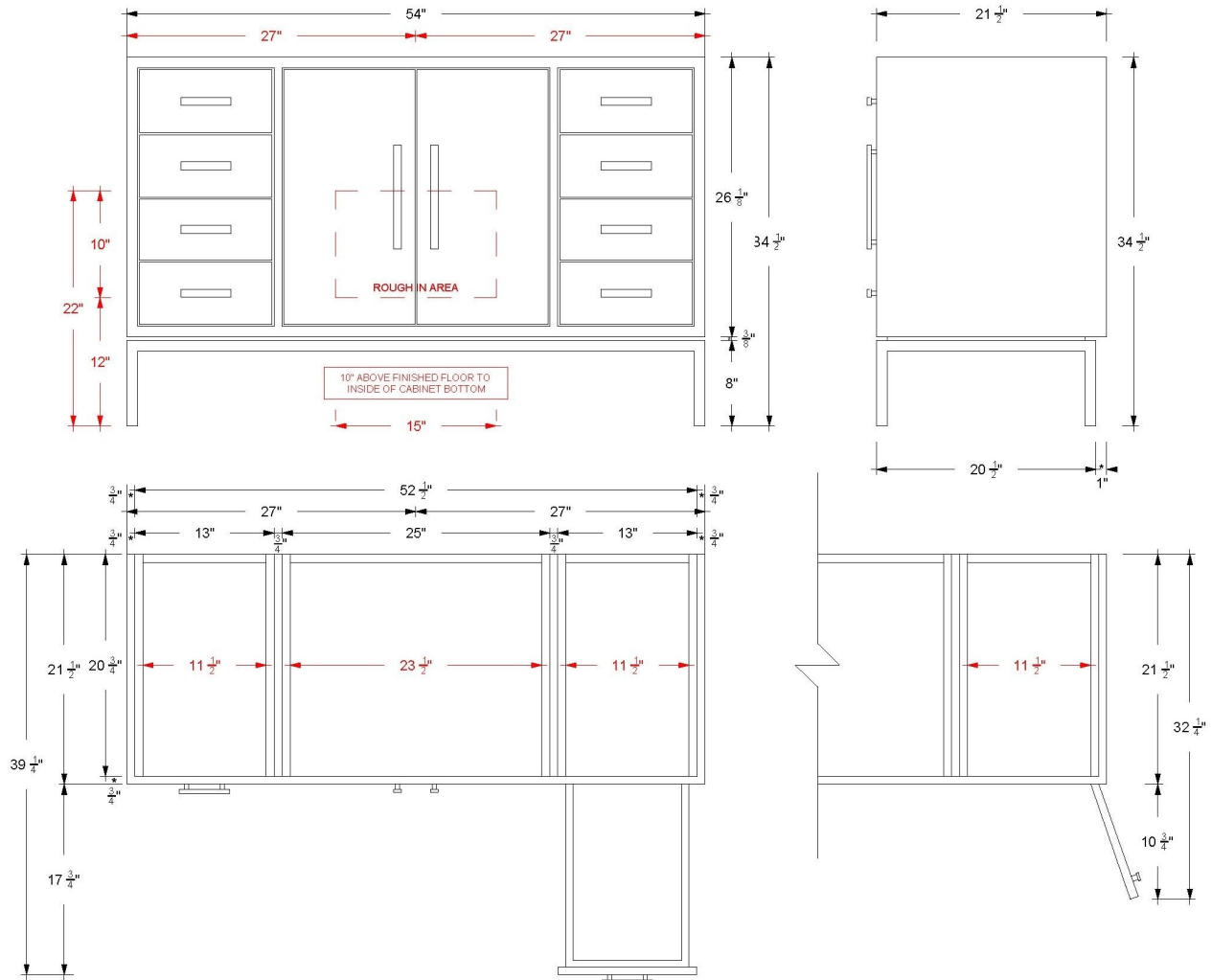


# VANDERLOC

## 54" Single Extra Wide Vanity

Rift White Oak

**RWS4-54**



### Technical Information

All product dimensions are nominal.

- Installation: Bath Vanity
- Number of doors: 2
- Number of drawers: 8

### Notes

Install this product according to the installation instructions.

Vanderloc® reserves the right to make revisions without notice to product specifications. For the most current Specification Sheet, go to [www.vanderloc.com](http://www.vanderloc.com)



# VANDERLOC

## 60" Single Extra Wide Vanity

Rift White Oak  
**RWS4-60**

### Features

- Inset construction with UV-coated plywood cabinet interior
- Full height doors with soft close Blum® 110° hinges
- Conversion Varnish finish
- 8" Tall metal base with built-in leg levelers and a 3/8" shadow gap between the vanity and the metal base
- Hardware size 8-13/16" & 3-3/4" center to center
- Top and faucet not included
- Plumbing rough in area cut-out detailed on page 2
- Made in the US

### Material

- Solid wood and Rift Oak veneers.
- Wood is a living material, and its beauty is enhanced by natural variations in grain, color, and pattern. No two pieces of wood are exactly the same, and the color will change with age, temperature, and exposure to light.
- The nature of wood grain can cause variations in stain depth. Our expert craftsmen hand-apply the stain to blend these variations.

### Installation

- Bath Vanity

### Included Products

- Decorative door hardware
- Leg leveling hardware
- Door bumpers

### Optional Products

- C-61-SRC.WS Silestone® Quartz Countertop
- C-61-SRC.SH Silestone® Quartz Countertop
- C-61-SRC.NH Silestone® Quartz Countertop
- C-61B Bath Vanity Top Backsplash

### Codes/Standards

- EPA TSCA Title VI
- CARB P2

### Vanderloc® One-Year Limited Warranty



Image displaying a 54" vanity in Rich Brown with Satin Gold hardware. Countertop and faucet not included

### Available Wood & Hardware Finishes

Color tiles intended for reference only.

Wood Finish		Hardware	
	<b>.cb</b> Classic Black		<b>.sg</b> Satin Gold
	<b>.gw</b> Gray Weathered		<b>.mb</b> Matte Black
	<b>.nw</b> Natural Weathered		<b>.sn</b> Satin Nickel
	<b>.rb</b> Rich Brown		<b>.ch</b> Polished Chrome
	<b>.sm</b> Smoked Modern		



