

VANDERLOC

30" 2-Drawer Floating Single Bath Vanity

18" Height with Integrated Wood Top

Ventura

VTS2-30-F18-R

Features

- Inset construction with UV-coated plywood cabinet interior
- Live Edge Drawer detail
- 3/4" Angled Frame
- 2 u-shaped fully functional softclose drawers
- Conversion Varnish finish
- French cleat mounting design for assisting with installation
- No Decorative Hardware
- Integrated Wood Top (No boring operations available)
- Sink and faucet sold separately
- Plumbing rough in area cut-out detailed on page 2
- Made in the US

Material

- Solid wood and White Oak plywood.
- Wood is a living material, and its beauty is enhanced by natural variations in grain, color, and pattern.
- No two pieces of wood are exactly the same, and the color will change with age, temperature, and exposure to light.
- The nature of wood grain can cause variations in stain depth. Our expert craftsmen apply paints and stains in a specific sequence to eliminate these variations.

Installation

- Bath Vanity
- Professional Installation Only

Included Products

- Door bumpers

Integrated Top Layout Options

- VTS2-30-F18-R - No Boring Operations & No Sink
- VTS2-30-F18-R1N - Vessel Sink & No Faucet Hole
- VTS2-30-F18-R1S - Vessel Sink & Single Faucet Hole
- VTS2-30-F18-R1W - Vessel Sink & Widespread Faucet Hole

Codes/Standards

- EPA TSCA Title VI
- CARB P2

Vanderloc® One-Year Limited Warranty



Image displaying a 36" vanity in Estate Emulsion with No Hardware. Faucet not included, sinks are optional

Available Paint & Hardware Finishes

Color tiles intended for reference only.

Wood Finishes



No Hardware



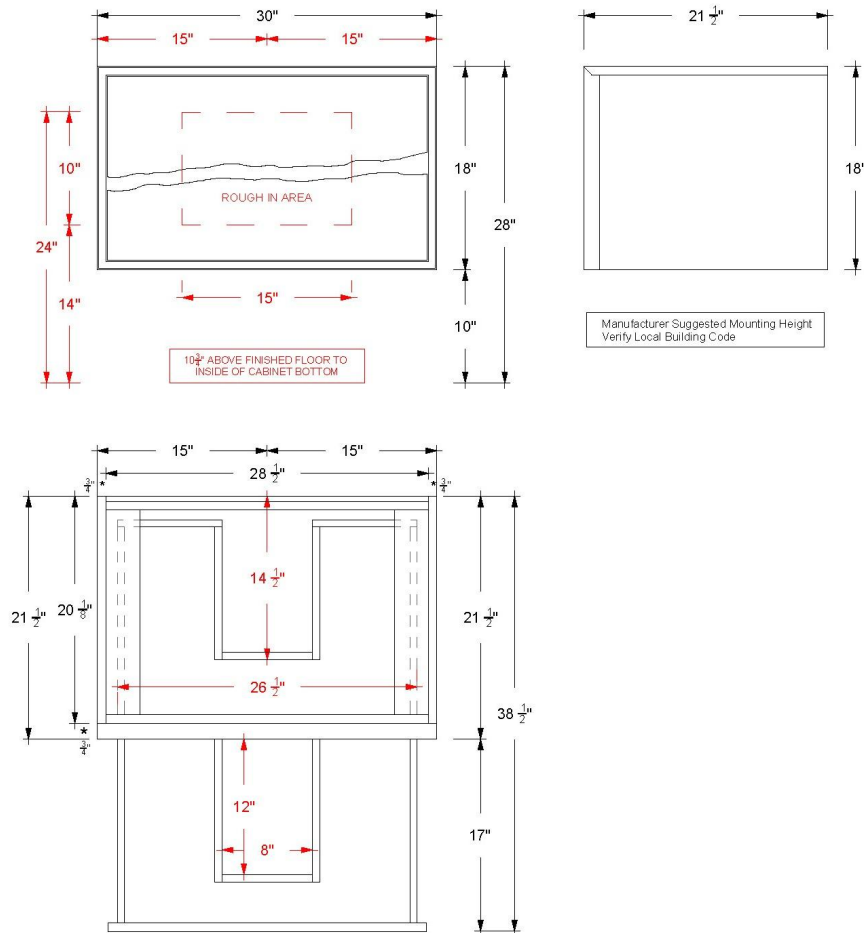
VANDERLOC

30" 2-Drawer Floating Single Bath Vanity

18" Height with Integrated Wood Top

Ventura

VTS2-30-F18-R



Technical Information

All product dimensions are nominal.

- Installation: Bath Vanity
- Number of drawers: 2

Notes

Install this product according to the installation instructions.

Vanderloc® reserves the right to make revisions without notice to product specifications. For the most current Specification Sheet, go to www.vanderloc.com



VANDERLOC

36" 2-Drawer Floating Single Bath Vanity

18" Height with Integrated Wood Top

Ventura

VTS2-36-F18-R

Features

- Inset construction with UV-coated plywood cabinet interior
- Live Edge Drawer detail
- 3/4" Angled Frame
- 2 u-shaped fully functional softclose drawers
- Conversion Varnish finish
- French cleat mounting design for assisting with installation
- No Decorative Hardware
- Integrated Wood Top (No boring operations available)
- Sink and faucet sold separately
- Plumbing rough in area cut-out detailed on page 2
- Made in the US

Material

- Solid wood and White Oak plywood.
- Wood is a living material, and its beauty is enhanced by natural variations in grain, color, and pattern.
- No two pieces of wood are exactly the same, and the color will change with age, temperature, and exposure to light.
- The nature of wood grain can cause variations in stain depth. Our expert craftsmen apply paints and stains in a specific sequence to eliminate these variations.

Installation

- Bath Vanity
- Professional Installation Only

Included Products

- Door bumpers

Integrated Top Layout Options

- VTS2-36-F18-R - No Boring Operations & No Sink
- VTS2-36-F18-R1N - Vessel Sink & No Faucet Hole
- VTS2-36-F18-R1S - Vessel Sink & Single Faucet Hole
- VTS2-36-F18-R1W - Vessel Sink & Widespread Faucet Hole

Codes/Standards

- EPA TSCA Title VI
- CARB P2

Vanderloc® One-Year Limited Warranty



Image displaying a 36" vanity in Estate Emulsion with No Hardware. Faucet not included, sinks are optional

Available Paint & Hardware Finishes

Color tiles intended for reference only.

Wood Finishes



No Hardware



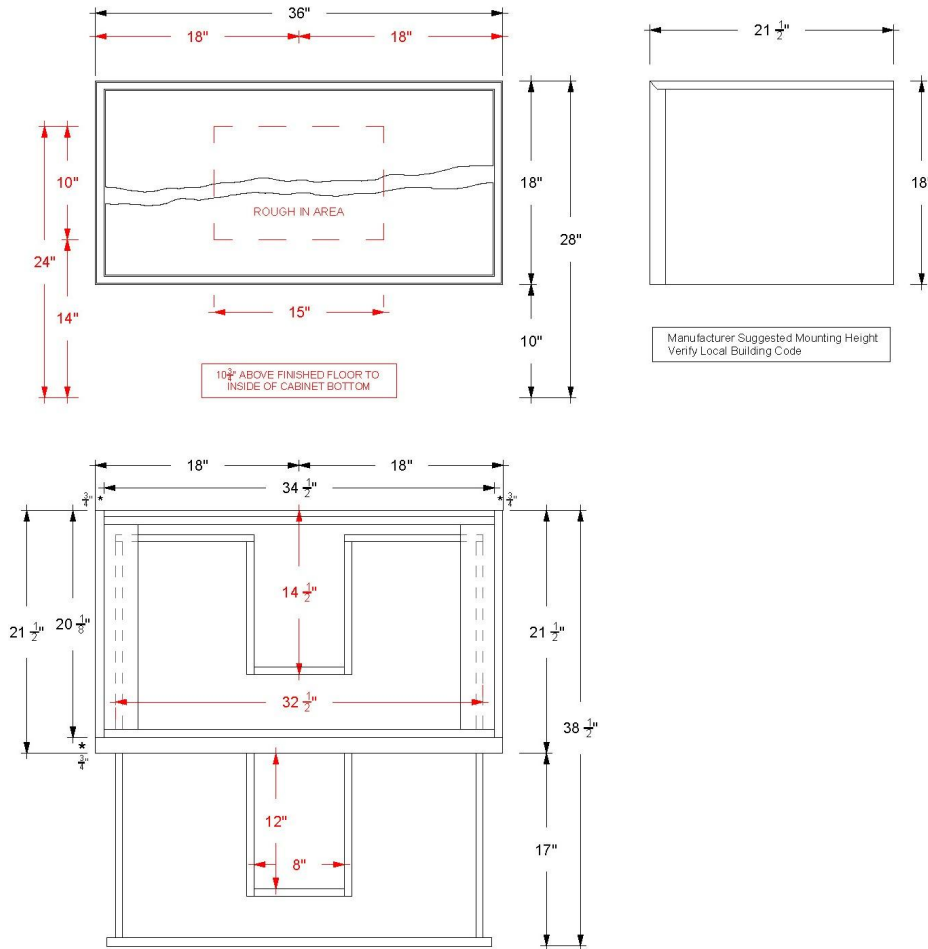
VANDERLOC

36" 2-Drawer Floating Single Bath Vanity

18" Height with Integrated Wood Top

Ventura

VTS2-36-F18-R



Technical Information

All product dimensions are nominal.

- Installation: Bath Vanity
- Number of drawers: 2

Notes

Install this product according to the installation instructions.



VANDERLOC

42" 2-Drawer Floating Single Bath Vanity

18" Height with Integrated Wood Top

Ventura

VTS2-42-F18-R

Features

- Inset construction with UV-coated plywood cabinet interior
- Live Edge Drawer detail
- 3/4" Angled Frame
- 2 u-shaped fully functional softclose drawers
- Conversion Varnish finish
- French cleat mounting design for assisting with installation
- No Decorative Hardware
- Integrated Wood Top (No boring operations available)
- Sink and faucet sold separately
- Plumbing rough in area cut-out detailed on page 2
- Made in the US

Material

- Solid wood and White Oak plywood.
- Wood is a living material, and its beauty is enhanced by natural variations in grain, color, and pattern.
- No two pieces of wood are exactly the same, and the color will change with age, temperature, and exposure to light.
- The nature of wood grain can cause variations in stain depth. Our expert craftsmen apply paints and stains in a specific sequence to eliminate these variations.

Installation

- Bath Vanity
- Professional Installation Only

Included Products

- Door bumpers

Integrated Top Layout Options

- VTS2-42-F18-R - No Boring Operations & No Sink
- VTS2-42-F18-R1N - Vessel Sink & No Faucet Hole
- VTS2-42-F18-R1S - Vessel Sink & Single Faucet Hole
- VTS2-42-F18-R1W - Vessel Sink & Widespread Faucet Hole

Codes/Standards

- EPA TSCA Title VI
- CARB P2

Vanderloc® One-Year Limited Warranty



Image displaying a 36" vanity in Estate Emulsion with No Hardware. Faucet not included, sinks are optional

Available Paint & Hardware Finishes

Color tiles intended for reference only.

Wood Finishes



No Hardware



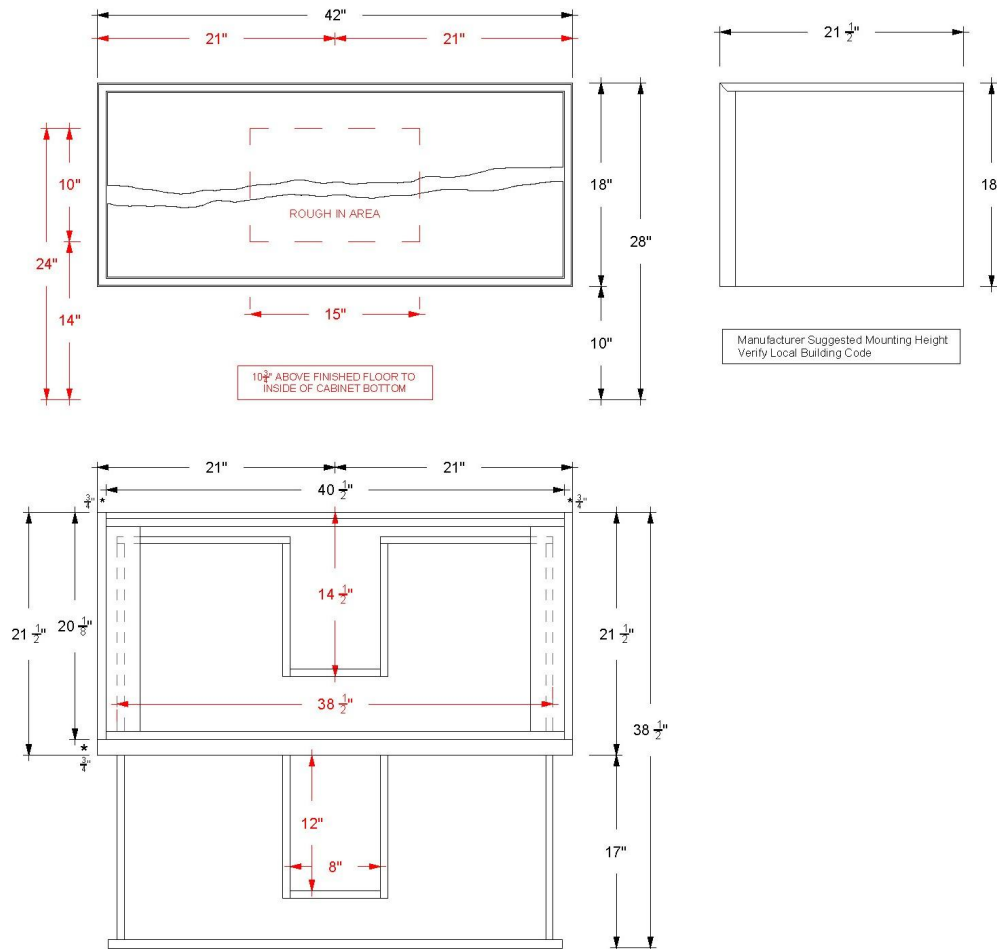
VANDERLOC

42" 2-Drawer Floating Single Bath Vanity

18" Height with Integrated Wood Top

Ventura

VTS2-42-F18-R



Technical Information

All product dimensions are nominal.

- Installation: Bath Vanity
- Number of drawers: 2

Notes

Install this product according to the installation instructions.

Vanderloc® reserves the right to make revisions without notice to product specifications. For the most current Specification Sheet, go to www.vanderloc.com



VANDERLOC

48" 2-Drawer Floating Single Bath Vanity

18" Height with Integrated Wood Top

Ventura

VTS2-48-F18-R

Features

- Inset construction with UV-coated plywood cabinet interior
- Live Edge Drawer detail
- 3/4" Angled Frame
- 2 u-shaped fully functional softclose drawers
- Conversion Varnish finish
- French cleat mounting design for assisting with installation
- No Decorative Hardware
- Integrated Wood Top (No boring operations available)
- Sink and faucet sold separately
- Plumbing rough in area cut-out detailed on page 2
- Made in the US

Material

- Solid wood and White Oak plywood.
- Wood is a living material, and its beauty is enhanced by natural variations in grain, color, and pattern.
- No two pieces of wood are exactly the same, and the color will change with age, temperature, and exposure to light.
- The nature of wood grain can cause variations in stain depth. Our expert craftsmen apply paints and stains in a specific sequence to eliminate these variations.

Installation

- Bath Vanity
- Professional Installation Only

Included Products

- Door bumpers

Integrated Top Layout Options

- VTS2-48-F18-R - No Boring Operations & No Sink
- VTS2-48-F18-R1N - Vessel Sink & No Faucet Hole
- VTS2-48-F18-R1S - Vessel Sink & Single Faucet Hole
- VTS2-48-F18-R1W - Vessel Sink & Widespread Faucet Hole

Codes/Standards

- EPA TSCA Title VI
- CARB P2

Vanderloc® One-Year Limited Warranty



Image displaying a 36" vanity in Estate Emulsion with No Hardware. Faucet not included, sinks are optional

Available Paint & Hardware Finishes

Color tiles intended for reference only.

Wood Finishes



No Hardware



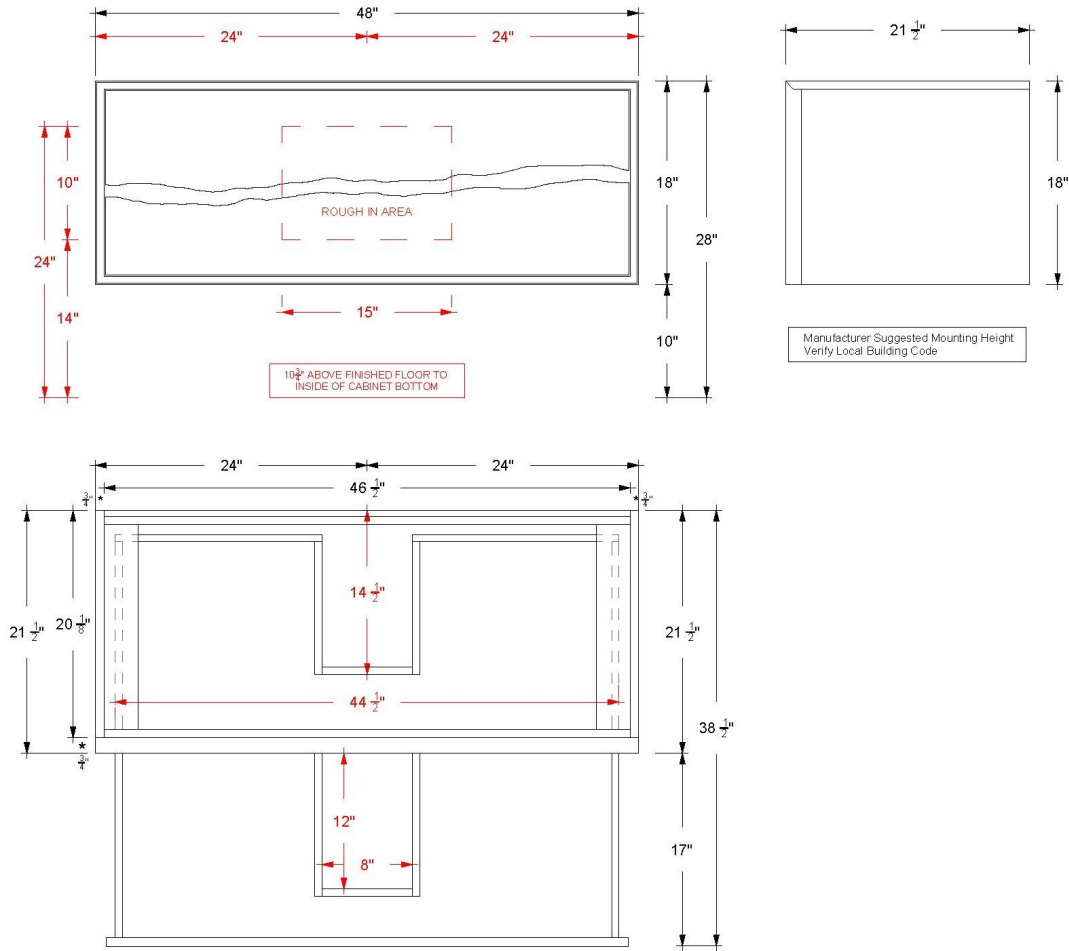
VANDERLOC

48" 2-Drawer Floating Single Bath Vanity

18" Height with Integrated Wood Top

Ventura

VTS2-48-F18-R



Technical Information

All product dimensions are nominal.

- Installation: Bath Vanity
- Number of drawers: 2

Notes

Install this product according to the installation instructions.

Vanderloc® reserves the right to make revisions without notice to product specifications. For the most current Specification Sheet, go to www.vanderloc.com

